



TRANSFORMING SUPPLY CHAINS FOR SUSTAINABLE GROWTH

OP2MA:

SUPPLY CHAIN EXCELLENCE BY DESIGN

Supply chain excellence means achieving the right balance between Service, Cost, and Capital, to ensure return on investment for a chosen strategy. OP2MA is a structured, systematic approach that gears operational performance for success.

Benefits

- Sustainable ROI
- Growth
- Resilience
- Competitive advantage
- Redeployment of cash to commercial development



OP2MA:

QUALIFIED OPPORTUNITIES | PRECISE ACTIONS | SUSTAINABLE RESULTS

STAGE 1: HEALTH CHECK



OP2MA Health Check aligns operational performance to ROI to systematically qualify opportunities and define improvement priorities

STAGE 2: DIAGNOSTICS



OP2MA Diagnostics identify the necessary changes to process, organisation, technology, and infrastructure to reset capabilities

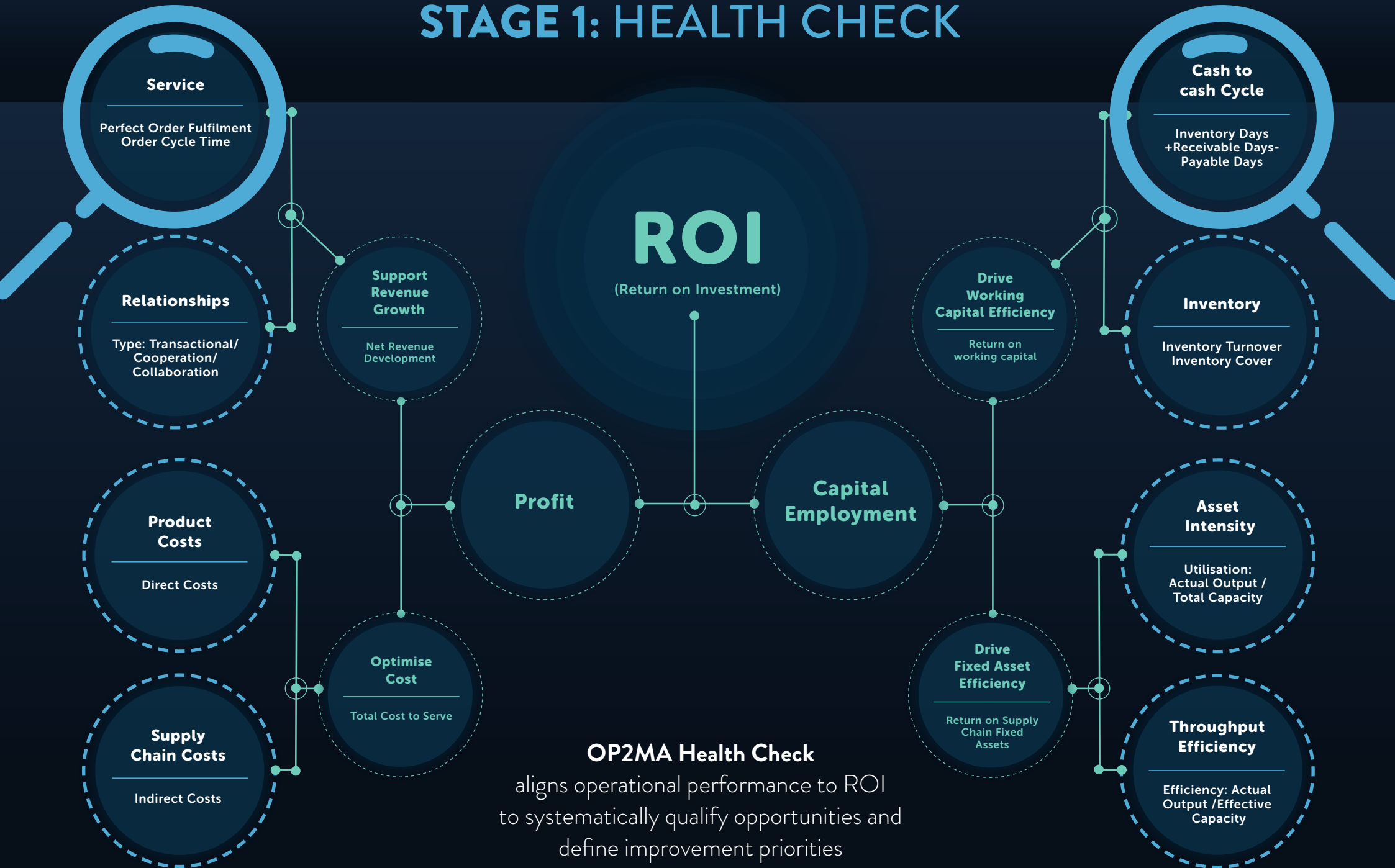
STAGE 3: TRANSFORMATION



OP2MA Transformation combines data-driven analytics with our extensive experience and knowhow to develop a targeted change programme

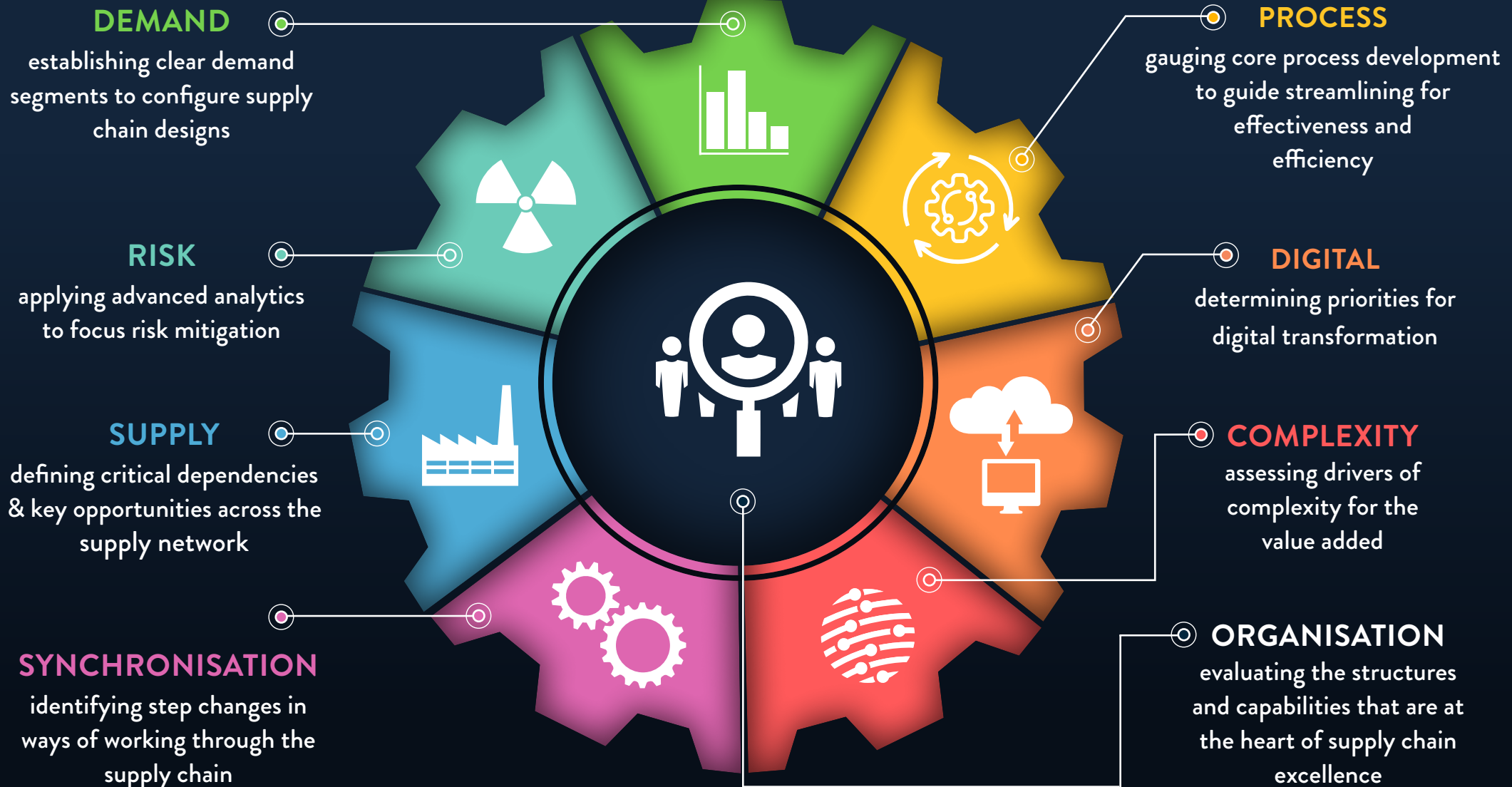
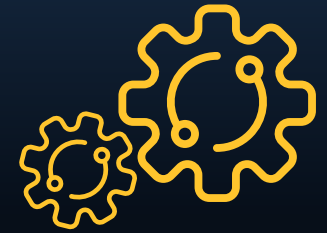
OP2MA Health Check determines what can be achieved, OP2MA Diagnostics define how and OP2MA Transformation makes it happen.

STAGE 1: HEALTH CHECK



STAGE 2: DIAGNOSTICS

OP2MA Diagnostics identify the necessary changes to process, organisation, technology, and infrastructure to reset capabilities





STAGE 3: TRANSFORMATION

OP2MA Transformation combines data-driven analytics with our extensive experience and know how to develop a targeted change programme

OP2MA: ACTION PROGRAMME EXAMPLE

Phase 1: 1-6 months	Phase 2: 6-12 months	Phase 3: 12 months plus
<ul style="list-style-type: none"> Master data clean-up Planning parameters reset Customer service metrics set Roles & Responsibilities (RACI) Supplier Quality improvement Monthly S&OP process 	<ul style="list-style-type: none"> Product portfolio rationalisation End to end ordering process Supplier delivery lead-times Cross-functional KPIs Logistics network reconfiguration Key customer collaboration 	<ul style="list-style-type: none"> Production capacity reset System integrations Process step-changes Organisational development Continuous improvements (from Phase 1 & 2)

OP2MA: DASHBOARD



SERVICE LEVEL: % ORDER FILL



P&L: DEVELOPMENT



CCC DAYS

Note: suggested actions are illustrative; actions listed will be different for each situation/client.

OP2MA:

A PROVEN APPROACH TO UNLOCKING VALUE FROM SUPPLY CHAIN OPERATIONS

A comprehensive understanding of how operational performance is driving financial results is essential to secure targeted improvements. Typical calls to action include;



Why OP2MA?

- Managing the supply chain effectively is critical to sustainability and growth
- All businesses can be set up for supply chain success and develop the capabilities to achieve excellence; it is not the exclusive preserve of large corporates
- Creating an environment where supply chain excellence is inevitable is as much about people as it is about process and technology
- Applying innovative analysis with practical insight can define the scope and scale of opportunity for any business
- The challenges to supply chain excellence are many and varied; coherent, data driven analytics provide a compass in the face of uncertainty, turbulence, and increasingly demanding environments.

How can we help?

Calum.Lewis@op2ma.net

www.op2ma.net

07966 667 427

